



FR-850 SMD Rework Station

Station, Handpiece (FR-8501), Iron holder (FH-225), USB cable, Power cord, Instruction manual

The dedicated software is available for download on HAKKO website.

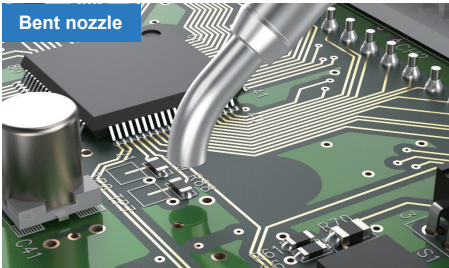
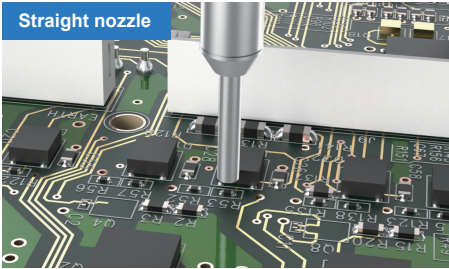
Specifications	
Model No.	FR-850
Power consumption	112 W
Temperature range	50 to 600 °C

Station	
Power consumption	7 W
Air flow	1.5 to 5 L/min.
Dimensions	98 (W) × 140 (H) × 165 (D) mm
Weight	1.8 kg

Handpiece	
Power consumption	105 W (24 V)
Nozzle to ground resistance	< 2 Ω
Nozzle to ground potential	< 2 mV
Heating element	Composite heater
Cord length	1.2 m
Total length (w/o cord)	227 mm (with NA01-C20 nozzle)
Weight (w/o cord)	70 g (with NA01-C20 nozzle)

* The airflow values are approximate. The airflow range may vary depending on the nozzle attached.

Applicable nozzles NA01 series nozzle



Unit : mm			
NA01-C10	NA01-C20	NA01-C30	
Inner diameter	Inner diameter	Inner diameter	
NA01-CB10	NA01-CB20	NA01-CB30	
Inner diameter	Inner diameter	Inner diameter	

HAKKO
HAKKO CORPORATION
OVERSEAS AFFILIATES

U.S.A.
AMERICAN HAKKO PRODUCTS, INC.
28920 AVENUE WILLIAMS VALENCIA, CA 91355, U.S.A.
TEL: (661) 294-0090 FAX: (661) 294-0096
Toll Free (800)88-HAKKO
https://www.HakkoUSA.com
E-mail:Support@HakkoUSA.com

HEAD OFFICE
4-5, SHIOKUSA 2-CHOME, NANIWA-KU, OSAKA, 556-0024 JAPAN
TEL:+81-6-6561-3225 FAX:+81-6-6561-8466
https://www.hakko.com E-mail:sales@hakko.com

CHINA
HAKKO DEVELOPMENT CO., LTD.
ROOM 1112-1115 11th FLOOR, INTERNATIONAL BANK TOWER,
191 DONGFENG ROAD WEST, GUANGZHOU, CHINA
TEL: 8135-0112,81350113,81351096 FAX: 8135-0181
https://www.hakko.com.cn
E-mail:sales@hakko.gz.cn

SINGAPORE
HAKKO PRODUCTS PTE LTD
1, GENTING LINK #02-04
PERFECT ONE, SINGAPORE 349518
TEL: 6748-2277 FAX: 6744-0033
https://www.hakko.com.sg
E-mail:sales@hakko.com.sg

Please access the web address
below for other distributors.
<https://www.hakko.com>

Specifications and design are subject to change without notice. Copyright HAKKO Corporation. All right reserved.




Reliable Thermal Solutions
for Advanced PWBs

FR-850


SMD Rework Station
- Micro Hot Air

Micro Hot Air with a wide temperature range and fine airflow control
- Ideal for precise rework on high thermal mass PWBs and delicate miniature components

Enables precise rework of densely packed SMDs without affecting surrounding components



50 ~ 600 °C
Set Temperature Range



1.5 ~ 5 L/min
Air Volume

Hot Air ON/OFF at Your Fingertips
Perfect for Work Under a Microscope

ACTION 1 Control hot air ON/OFF with the iron unit button. Ideal for precision work under a microscope. Enhances both efficiency and accuracy in micro-scale operations.

ACTION 2 Wide top-mounted button is also for hot air ON/OFF control.

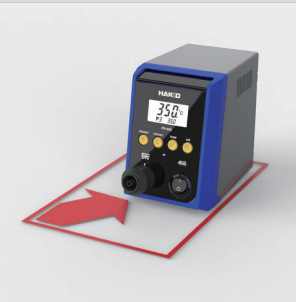
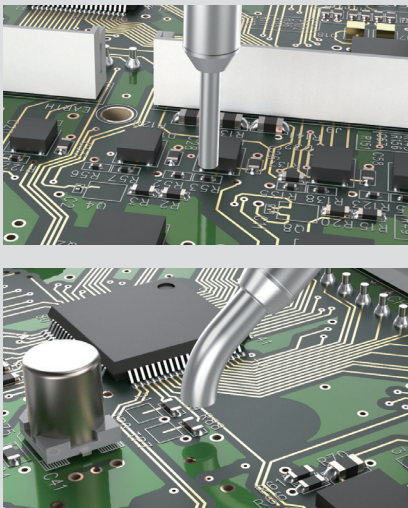


Operating status is instantly visible with LED indicator on top.



Six Nozzle Types for a Wide Range of Applications

Provides straight and bent nozzles. The bent nozzle allows hot air to be efficiently directed at components during microscope-assisted operations. Cartridge-style design enables quick and tool-less nozzle replacement.



Compact Design

55% smaller footprint compared to conventional models. Ideal for space-saving in work environments.



Auto Cooling Function

Equipped with an auto-cooling function that activates simply by placing the iron on the stand.



Temperature Measurement

Hot air temperature measurement is possible by installing the A1557 sensor on the stand.



Software

By connecting the station to a PC, the set temperature of the hot air, calibration/correction, and the hot air temperature history during operation can be recorded on the PC. Enables management with zero human error.



Intuitive Operation

All settings can be easily adjusted with just four buttons.



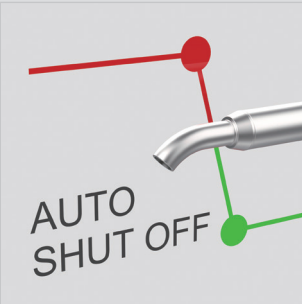
Iron stand

One-touch nozzle attachment and removal ensures safe and easy handling. Capable of storing up to four nozzles.



Infrared Communication

Automatic calibration and correction can be completed by transmitting the measurement data from the thermometer (FG-100B/FG-101B) to the main unit, via infrared.



Auto Shutoff

Auto shutoff function reduces unnecessary power consumption and minimize equipment wear.